

The Big 8 UK bumblebees

Buff-tailed bumblebee



Queens are very large. The queen's tail is blonde, but worker and male tails are white, with a thin blonde edge.



Worker/male Queen

Early bumblebee



The queens and males have two clear yellow bands, but workers often only have one. The tail is red.



Male Worker Queen

White-tailed bumblebee

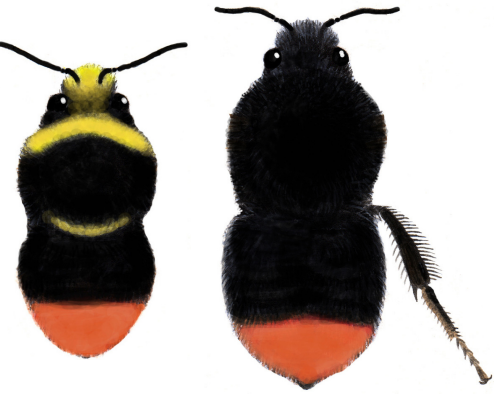


Queens and workers have a clean white tail and two lemon-yellow bands. The males have more yellow hair, and have yellow tufts of hair on the head and face.



Male Queen/worker

Red-tailed bumblebee



The queens and workers are completely black, except for a dark red tail. The males look similar, but have some yellow hair.



Male Queen/worker

Common carder bee



This bee is mostly brown or ginger and sometimes has thin black bands. Queens, workers and males all look very similar.

Queen/worker/male

Tree bumblebee



The Tree bumblebee is a new arrival to the UK. It can be found in most of England and Wales, but not in Scotland and Ireland. It is the only one of our bees to have a ginger and black body, with a white tail. It usually nests above ground, often in bird boxes and trees.

Queen/worker/male

Garden bumblebee



This bee has three yellow bands on its body, with a clean white tail. The queen, workers and males all appear similar. It has a longer face than other bumblebees.

Queen/worker/male

Heath bumblebee



The Heath bumblebee is similar to the Garden bumblebee, which also has three yellow stripes and a white tail. However, the face of the Heath bumblebee is more round than that of the Garden bumblebee .

Queen/worker/male